

CAPACITY ASSESSMENT

Co-Decisionmaking, Supported Decision Making, Guardianship & Trusteeship



Capacity Assessments are required part of applications for Adult Guardian and Trusteeship under the Alberta Adult Guardian and Trusteeship Act.



What Is Capacity?

Capacity is a person's ability to understand facts about a decision and what could happen if they choose one option over another, or if they choose to do nothing.

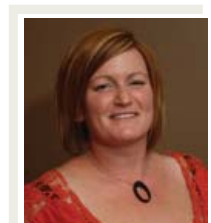
The legal definition of capacity under the Act is: Capacity is the ability to understand information relevant to a decision and to appreciate the reasonably foreseeable consequences of (i) making a decision or (ii) the failure to make a decision.

Designated Capacity Assessors are also Registered Professionals And Members Of Associations such as Alberta College of Social Workers, Association for Death Education & Counselling, International Society for Neuronal Research and the Association for Applied Psychophysiology and Biofeedback.

Designated Capacity Assessors



Len McEwen
MSW RSW



Valerie Kelso
BSW, MSW (Candidate) RSW



HIGHLANDER COUNSELLING & MEDIATION
www.highlander-counselling.com



Please Call to Arrange an Appointment

1 (866) 824-8175